

Westbourne Apartments, Central Avenue London, SW6

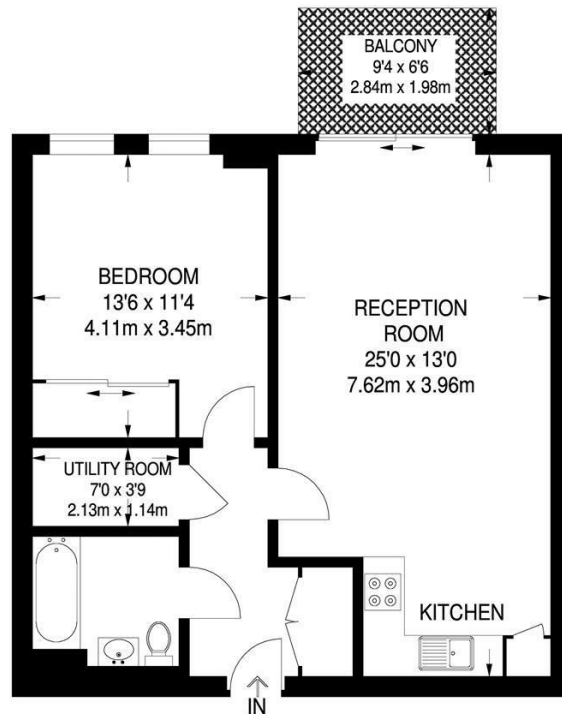
Offers In Excess Of £599,950

FOR SALE

Gray's

RESIDENTIAL

- Eighth floor apartment
- Fully integrated appliances
- 24-hour concierge service
- Onsite fitness suite
- Private balcony
- Floor-to-ceiling windows throughout
- Secure video entry system
- Sainsburys superstore on the development's doorstep



EIGHTH FLOOR
633 SQ FT / 58.8 SQ M

Gray's Residential are pleased to offer to the market this luxurious eighth floor apartment for sale in Fulham Riverside.

This apartment itself offers stylish and contemporary interiors throughout and comprises a light and spacious open-plan living, dining and kitchen area, a great size double bedroom, modern bathroom suite and a private balcony serving as relaxing outdoor space and offering partial views of the River Thames. Residents have the exclusive use of the 24-hour concierge service, onsite fitness suite and outdoor gym, and for added convenience, there is Sainsburys superstore right on the development's doorstep.

Fulham has become one of London's most desirable areas, home to a wide variety of shops, bars and restaurants. Westbourne Apartments are just a short walk from Chelsea Harbour, Imperial Wharf Station and the famous Kings Road.

*Offered to the market chain fee